

**Site
Tour
2 of 2**

EDC is returning to 2014 Spring Town Meeting with articles for **River's Edge**, which would allow potential housing on unused, town-owned land on Route 20, next to the transfer station access road.

Wayland Economic Development Committee
invites you to explore

**SECOND
TOUR**

What could housing at River's Edge be like?

EDC is hosting two tours of new rental communities – the first tour was senior-focused, and this second tour showcases new, non-age-restricted rental housing – to explore what housing on the River's Edge site might look and/or be like.

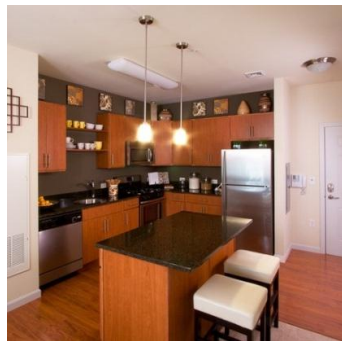


Please join us on our **second tour** of
new **apartment communities**:

Concord Mews

One Nathan Pratt Drive, Concord, MA

- 350 units (twice River's Edge size)
- 25% affordable, like River's Edge
 - 2-3 stories
- No age restriction



Thursday, March 20, 2014
10:00 am – noon

Location: Meet at Town Building, Town Planner's office at 10 am

Transportation available, please RSVP to ssarkisian@wayland.ma.us.

Questions? Please call Jean Milburn, EDC (508) 358-2563

For information on River's Edge, please see EDC's webpage on the Town of Wayland website.